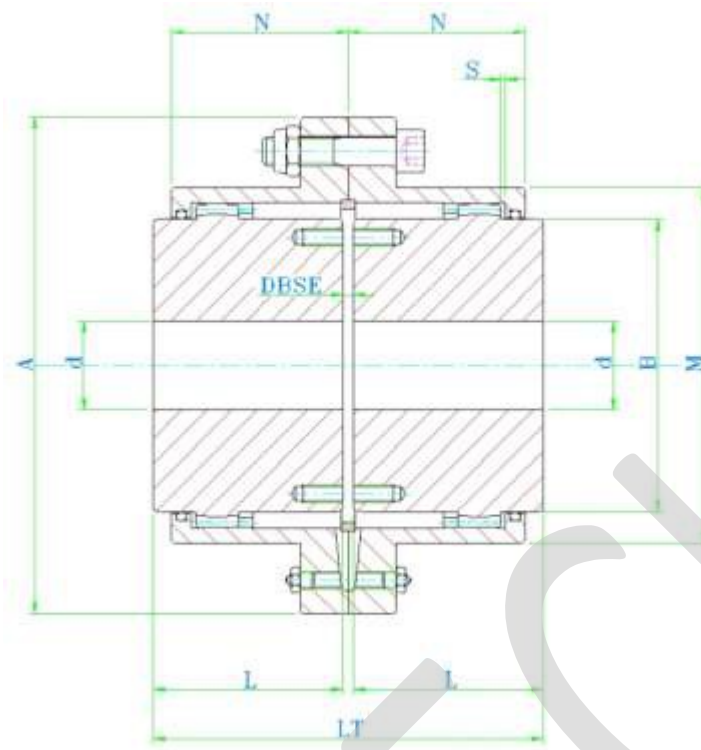
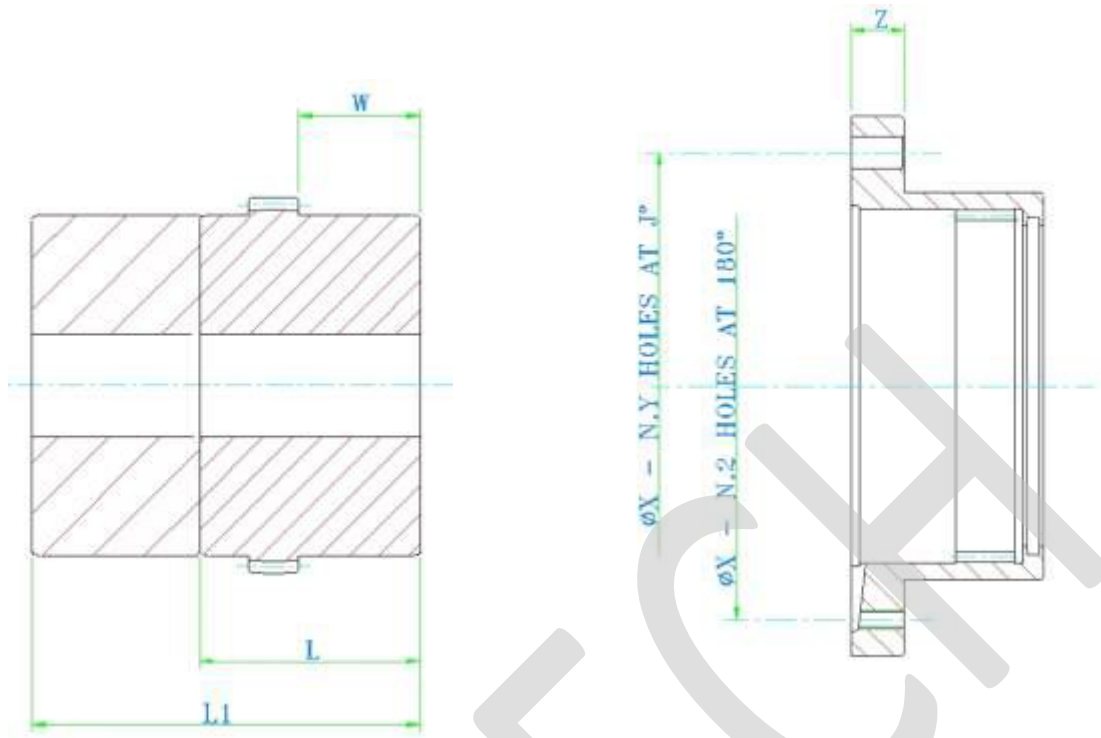


## AGMA GEAR COUPLINGS SERIES



SIZE	Nominal Torque LB-IN	Nominal Torque [kNm]	MAX SPEED [rpm]	MAX BORE d [inch]	MAX BORE [mm]	A [inch]	M [inch]	N [inch]	LT [inch]	B [inch]	DBSE [inch]
A 1	8,850	1.0	6200	1.65	42	4.56	3.06	1.66	3.50	2.31	0.13
A 1.5	19,400	2.2	5700	2.2	56	6.00	3.97	1.88	4.00	3	0.13
A 2	36,200	4.1	5100	2.75	70	7.00	4.86	2.38	5.00	4	0.13
A 2.5	62,800	7.1	4450	3.35	85	8.38	5.84	2.88	6.25	4.63	0.19
A 3	97,300	11	4100	4.21	107	9.44	6.84	3.31	7.38	5.63	0.19
A 3.5	152,200	17.2	3550	4.92	125	11.00	7.91	3.81	8.63	6.50	0.25
A 4	221,200	25	3100	5.5	140	12.50	9.25	4.25	9.75	7.50	0.25
A 4.5	310,600	35.1	2750	6.3	160	13.63	10.38	4.81	10.94	8.50	0.31
A 5	453,100	51.2	2550	6.7	170	15.31	11.56	5.50	12.38	9.50	0.31
A 5.5	691,200	78.1	2250	7.75	197	16.75	12.72	6.00	14.13	10.50	0.31
A 6	794,800	89.8	2100	8.4	213	18.00	14.00	6.69	15.13	11.50	0.31
A 7	1,196,600	135.2	2000	10	254	20.75	15.75	7.38	17.75	13.00	0.38

## AGMA GEAR COUPLINGS SERIES COMPONENTS: HUBS & SLEEVES DETAILS



SIZE	Distance between hole centers "X"	Bolts		Flange Thickness Z	Standard Hub Length L	Longer Hub Length L1	W
		Q.ty	Size				
A 1	3.750	6	1/4	0.52	1.69	4.00	0.75
A 1.5	4.812	8	3/8	0.76	1.94	4.50	0.81
A 2	5.875	6	1/2	0.76	2.44	4.50	1.25
A 2.5	7.125	6	5/8	0.85	3.03	6.50	1.53
A 3	8.125	8	5/8	0.85	3.59	7.00	1.69
A 3.5	9.500	8	3/4	1.06	4.19	7.50	1.88
A 4	11.000	8	3/4	1.06	4.75	8.25	2.16
A 4.5	12.000	10	3/4	1.06	5.31	9.00	2.56
A 5	13.500	8	7/8	1.45	6.03	9.50	2.94
A 5.5	14.500	14	7/8	1.45	6.91	10.50	3.19
A 6	15.750	14	7/8	1.00	7.41	AVAILABLE ON DEMAND	
A 7	18.250	16	1	1.12	8.69		