

art.GBA art.GBI

STEEL LOCKING RING "GBA" made of R80 zinc coated steel (36SMnPb14), for TR10/80 bars.

STAINLESS STEEL LOCKING RING "GBI" made of AISI 303 stainless steel, for TR10/80 bars.

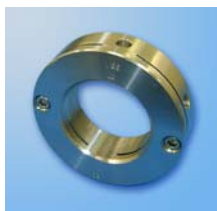
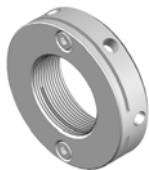
This type of ring, made by us, allows the adjustment of pressure on the bearings by gently screwing down to totally eliminate any axial play, ensuring a smooth support of the load and maintaining perfect rotation of the trapezoidal screw. The locking of the ring, after positioning, occurs gradually by tightening the two countersunk hex socket cap screws (V) located on the side of the ring, which impart pressure on the thread to lock with minimal risk of loosening. This item is outstanding above all for the fact that it allows easy additional adjustments over time by loosening the hex cap socket screws (V) to unlock the ring which allows new positioning. The repetition of adjustments does not cause any failure of the locking system which can be adjusted by a pin wrench to applied to the outside of the ring purposely designed for same. Once the hex socket cap screws (V) are engaged in the GBA/GBI ring it is possible to add ring KM and locking washer for further security against loosening (see ring kit GBA/GBI). On the next page is a chart of the carrying capacity of the rings, their locking torque and their resistance to unscrewing.

As previously mentioned, in some circumstances it may be necessary to loosen or tighten the GBA/GBI ring using a pin wrench of the size listed in the chart below.

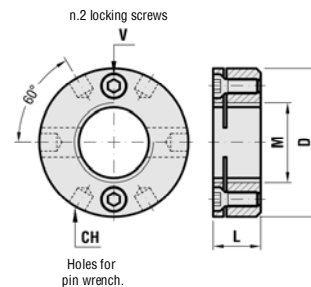
The table below shows the correct GBA/GBI ring required for each specific threaded bar code.



Locking ring GBA in R80 steel with white zinc coating.



Locking ring GBI in AISI 303 stainless steel.



• CODIFICATION AND SIZING

Use of GBA/GBI rings in reference to the type of threaded bar						Technical date and dimensions of GBA/GBI rings					
"FC" series threaded bar (shank side machined with sufficient space for ring)	"IF/BI" series threaded bar (TR threaded side machined to the core diameter)	GBA CODE R80 steel	Usable ring art.GBA (steel)	GBI CODE Stainless steel AISI 303	Usable ring art.GBI (stainless steel)	M	D	L	CH Pin wrench for GBA/GBI	V 2 countersunk screws	Weight Kg
* TR10-12	TR16	A02AS10	GBA 10	A02IS10	GBI 10	M10x0,75	25	10	25/28	M3x6	0,024
TR14	TR18	A02AS12	GBA 12	A02IS12	GBI 12	M12x1	30	14	30/32	M4x8	0,052
TR16	TR20-22	A02AS15	GBA 15	A02IS15	GBI 15	M15x1	35	15	34/36	M4x10	0,085
TR18-20	TR24-25	A02AS17	GBA 17	A02IS17	GBI 17	M17x1	40	16	40/42	M4x10	0,112
TR22-24-25	TR26-28-30	A02AS20	GBA 20	A02IS20	GBI 20	M20x1	45	16	45/50	M5x10	0,147
TR26-28-30	TR32-35-36	A02AS25	GBA 25	A02IS25	GBI 25	M25x1,5	50	16	45/50	M5x10	0,174
TR32-35-36	TR40	A02AS30	GBA 30	A02IS30	GBI 30	M30x1,5	55	16	52/55	M5x10	0,182
TR40	TR45-46	A02AS35	GBA 35	A02IS35	GBI 35	M35x1,5	60	16	58/62	M5x10	0,212
TR45-46	TR50-55	A02AS40	GBA 40	A02IS40	GBI 40	M40x1,5	70	18	68/75	M5x12	0,330
TR50	TR60	A02AS45	GBA 45	A02IS45	GBI 45	M45x1,5	80	20	80/90	M6x12	0,490
TR55	TR65	A02AS50	GBA 50	A02IS50	GBI 50	M50x1,5	80	23	80/90	M6x14	0,510
TR60	TR70	A02AS55	GBA 55	A02IS55	GBI 55	M55x2	90	25	80/90	M6x16	0,740
TR65	TR80	A02AS60	GBA 60	A02IS60	GBI 60	M60x2	100	28	95/100	M6x20	1,040

* To use the GBA 10 ring on the shank side FC series threaded bar TR10 a stop needs to be created by inserting CCA TR10 nut at the end of the thread and pinning or blocking it.
 — For sufficient quantities, locking rings GBA/GBI of 65, 70, 75, 80, 85, 90, 95, 100 with a threaded pitch of 2 (mm) ISO 965/III, can be made on request.

• EXAMPLES OF APPLICATIONS OF GBA-GBI LOCKING RINGS ON TRAPEZOIDAL SCREWS.

