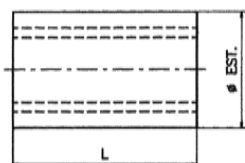
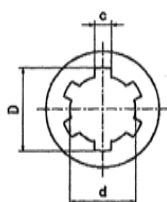


# Drážkované náboje

Materiál: 9 SMnPb 36



| Typ   | Kód       | D  | d  | c   | Z<br>Ø | Tolerancia |    | L  | Norma  | Hmotnosť<br>[kg] |
|-------|-----------|----|----|-----|--------|------------|----|----|--------|------------------|
| 11BB  | SBBO 1100 | 14 | 11 | 3   | 6      | 18,75      | h8 | 30 | 11 UNI | 0,033            |
| 13BB  | SBBO 1300 | 16 | 13 | 3,5 | 6      | 21,75      | h8 | 40 | 13 UNI | 0,062            |
| 13BB1 | SBBO 1301 | 16 | 13 | 3,5 | 6      | 24,75      | h8 | 40 | 13 UNI | 0,097            |
| 16BB  | SBBO 1600 | 20 | 16 | 4   | 6      | 27,75      | h8 | 40 | 16 UNI | 0,108            |
| 18BB  | SBBO 1800 | 22 | 18 | 5   | 6      | 31,75      | h8 | 40 | 18 UNI | 0,146            |
| 21BB  | SBBO 2100 | 25 | 21 | 5   | 6      | 35,75      | h8 | 45 | 21 UNI | 0,208            |
| 23BB  | SBBO 2300 | 28 | 23 | 6   | 6      | 39,70      | h8 | 45 | 23 UNI | 0,254            |
| 26BB  | SBBO 2600 | 32 | 26 | 6   | 6      | 44,70      | h8 | 45 | 26 UNI | 0,322            |
| 32BB  | SBBO 3200 | 38 | 32 | 6   | 8      | 49,70      | h8 | 50 | 32 UNI | 0,380            |
| 36BB  | SBBO 3600 | 42 | 36 | 7   | 8      | 59,70      | h8 | 70 | 36 UNI | 0,880            |
| 42BB  | SBBO 4200 | 48 | 42 | 8   | 8      | 69,70      | h8 | 80 | 42 UNI | 1,380            |
| 46BB  | SBBO 4600 | 54 | 46 | 9   | 8      | 81,70      | h8 | 90 | 46 UNI | 2,324            |