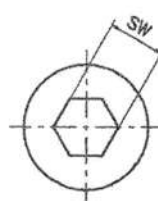
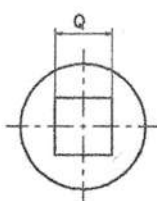
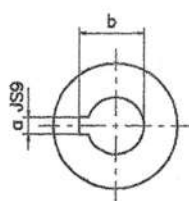
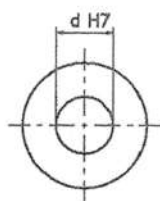
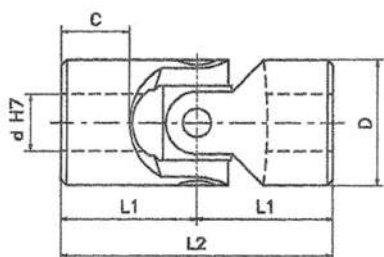


Jednoduché klíby nerezové, s kĺznym uložením
Séria X

Max. uhol: 45°



Typ	Kód	d	D	L2	L1	C	a*	b*	Q*	SW*	Hmot. [kg]
01X	SXOS 0600	6	16	34	17	8	2	7	6	6	0,05
02X	SXOS 0800	8	16	40	20	11	2	9	8	8	0,05
03X	SXOS 1000	10	22	48	24	12	3	11,4	10	10	0,10
04X	SXOS 1200	12	25	56	28	13	4	13,8	12	12	0,16
1X	SXOS 1600	16	32	68	34	16	5	18,3	16	16	0,30
3X	SXOS 2000	20	42	82	41	18	6	22,8	20	20	0,60
5X	SXOS 2500	25	50	108	54	26	8	28,3	25	25	1,20
6X	SXOS 3000	30	58	122	61	29	8	33,3	30	30	1,85

Kíby a kĺbové hriadele

S



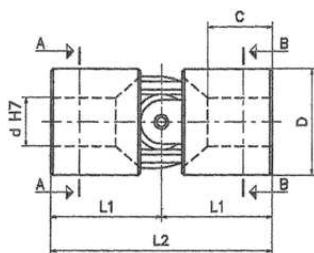
Jednoduché kíby vysokej kvality, vopred namastené,
so zabudovaným mazacím zariadením

Séria S

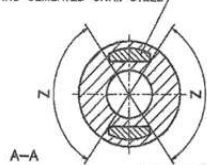
Jadro a celá vidlica z ocele CrNi
Cementované a kalené na HRC 60,
R 200Kgf/mm²

Max. uhol: 45°

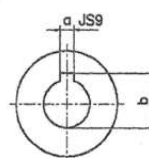
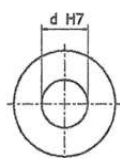
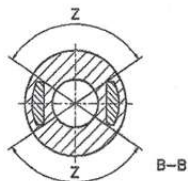
Max. počet otáčok 1000/min



60 HRC CEMENTED Cr.Ni. STEEL



Z=boring area



Typ	Kód	d	D	L2	L1	C	Kód	Kód	a	b	Hmot. [kg]
01S	SSOS 0600	6	16	34	17	9	–	–	–	–	0,05
02S	SSOS 0800	8	18	40	20	11	–	–	–	–	0,06
03S	SSOS 1000	10	22	48	24	14	SSOS 101C	SSOS 102C	3	11,4	0,11
04S	SSOS 1200	12	26	56	28	16	SSOS 121C	SSOS 122C	4	13,8	0,17
05S	SSOS 1400	14	29	60	30	17	SSOS 141C	SSOS 142C	5	16,3	0,22
1S	SSOS 1600	16	32	68	34	20	SSOS 161C	SSOS 162C	5	18,3	0,32
2S	SSOS 1800	18	37	74	37	21	SSOS 181C	SSOS 182C	6	20,8	0,47
3S	SSOS 2000	20	42	82	41	23	SSOS 201C	SSOS 202C	6	22,8	0,67
4S	SSOS 2200	22	47	95	47,5	25	SSOS 221C	SSOS 222C	6	24,8	1,00
5S	SSOS 2500	25	52	108	54	29	SSOS 251C	SSOS 252C	8	28,3	1,35
6S	SSOS 3000	30	58	122	61	34	SSOS 301C	SSOS 302C	8	33,3	1,85

Klíby a klíbové hriadele

H

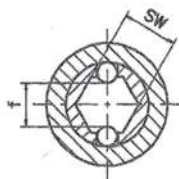
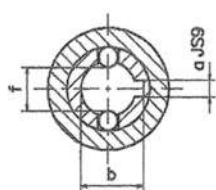
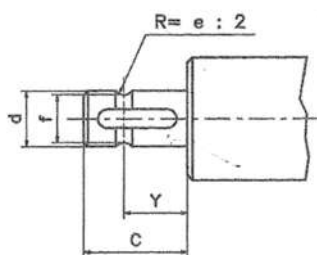
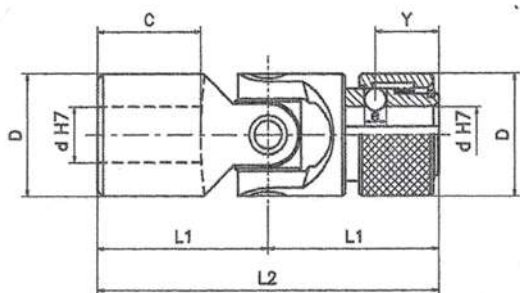


Jednoduché rýchlopínacie klíby s ihličkovým uložením

Séria H

Max. uhol: 45°

Max. počet otáčok 4000/min



Typ	d	D	L2	L1	C	Y	e	f	Kód	a	b	Kód	SW
03HR	10	22	62	31	17	11,5	4	8,7 (8)	SHOR 101C	3	11	SHOR 10SW	10 (9,06)
04HR	12	25	74	37	21	13,5	4	11 (10,5)	SHOR 121C	4	13,3	SHOR 12SW	12 (11,15)
05HR	14	25	74	37	21	13,5	4	13	SHOR 141C	5	15,3	SHOR 14SW	14
1HR	16	32	86	43	24	14	6,35	14,8	SHOR 161C	5	17,3	SHOR 16SW	16
2HR	18	36	96	48	28	19	8	16	SHOR 181C	6	19,8	SHOR 18SW	18
3HR	20	42	108	54	31	19	8	18	SHOR 201C	6	22,8	SHOR 20SW	20
4HR	22	45	120	60	34	20,5	10	20	SHOR 221C	6	24,8	SHOR 22SW	22
5HR	25	50	132	66	38	20,5	10	23	SHOR 251C	8	28,3	SHOR 25SW	25
6HR	30	58	166	83	49	25	10	28	SHOR 301C	8	33,3	SHOR 30SW	30

Klíby a klíbové hriadele

H



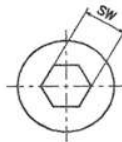
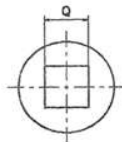
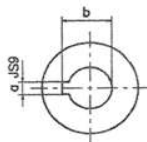
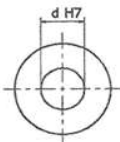
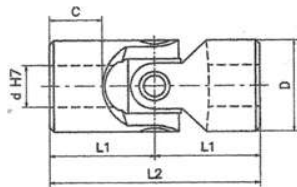
Jednoduché klíby s ihličkovým uložením bezúdržbové
Séria H

Max. uhol: 45°

Max. počet otáčok 4000/min

H totožné s DIN 808

HB totožné s DIN 808/7551



Typ	Kód	d	D	L2	L1	C	Kód	Kód	a	b	Kód	Q	SW*	Hmot. [kg]
03H	SHOS 1000	10	22	48	24	12	SHOS 101C	SHOS 102C	3	11,4	SHOS 102Q	10	10	0,10
04H	SHOS 1200	12	25	56	28	13	SHOS 121C	SHOS 122C	4	13,8	SHOS 122Q	12	12	0,16
05H	SHOS 1400	14	28	60	30	14	SHOS 141C	SHOS 142C	5	16,3	SHOS 142Q	14	14	0,20
1H	SHOS 1600	16	32	68	34	16	SHOS 161C	SHOS 162C	5	18,3	SHOS 162Q	16	16	0,30
2H	SHOS 1800	18	36	74	37	17	SHOS 181C	SHOS 182C	6	20,8	SHOS 182Q	18	18	0,45
3H	SHOS 2000	20	42	82	41	18	SHOS 201C	SHOS 202C	6	22,8	SHOS 202Q	20	20	0,60
4H	SHOS 2200	22	45	95	47,5	22	SHOS 221C	SHOS 222C	6	24,8	SHOS 222Q	22	22	0,95
5H	SHOS 2500	25	50	108	54	26	SHOS 251C	SHOS 252C	8	28,3	SHOS 252Q	25	25	1,20
6H	SHOS 3000	30	58	122	61	29	SHOS 301C	SHOS 302C	8	33,3	SHOS 302Q	30	30	1,85
06H1	SHOS 3200	32	58	130	65	33	SHOS 321C	SHOS 322C	10	35,3	SHOS 322Q	30	30	2,00
7H	SHOS 3500	35	70	140	70	35	SHOS 351C	SHOS 352C	10	38,3	-	-	-	3,15
8H	SHOS 4000	40	80	160	80	39	SHOS 401C	SHOS 402C	12	43,3	-	-	-	4,60
9H	SHOS 5000	50	95	190	95	46	SHOS 501C	SHOS 502C	14	53,8	-	-	-	7,60
04HB	SHBS 1200	12	22	62	31	18	SHBS 121C	SHBS 122C	4	13,8	SHBS 102Q	10	10	0,12
1HB	SHBS 1600	16	25	74	37	21	SHBS 161C	SHBS 162C	5	18,3	SHBS 122Q	12	12	0,20
3HB	SHBS 2000	20	32	86	43	24	SHBS 201C	SHBS 202C	6	22,8	SHBS 162Q	16	16	0,35
5HB	SHBS 2500	25	42	108	54	31	SHBS 251C	SHBS 252C	8	28,3	SHBS 202Q	20	20	0,80
6HB	SHBS 3000	30	50	132	66	38	SHBS 301C	SHBS 302C	8	33,3	SHBS 252Q	25	25	1,20
8HB	SHBS 4000	40	70	166	83	47	SHBS 401C	SHBS 402C	12	43,3	-	-	-	2,90

Klíby a klíbové hriadele

G

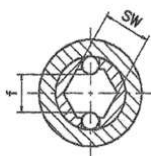
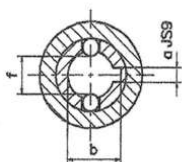
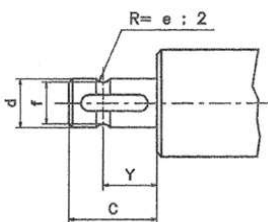
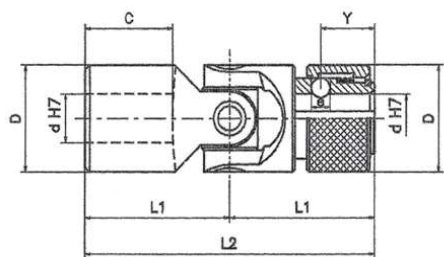


Jednoduché rýchlopínacie klíby s kĺznym uložením.

Séria G

Max. uhol: 45°

Max. počet otáčok 1000/min



Typ	d	D	L2	L1	C	Y	e	f	Kód	a	b	Kód	SW
02GR	8	16	52	26	14	9,5	3,5	6,3	SGOR 081C	2	9	SGOR 08SW	8
03GR	10	22	62	31	17	11,5	4	8,7 (8)	SGOR 101C	3	11	SGOR 10SW	10 (9,06)
04GR	12	25	74	37	21	13,5	4	11 (10,5)	SGOR 121C	4	13,3	SGOR 12SW	12 (11,15)
05GR	14	25	74	37	21	13,5	4	13	SGOR 141C	5	15,3	SGOR 14SW	14
1GR	16	32	86	43	24	14	6,35	14,8	SGOR 161C	5	17,3	SGOR 16SW	16
2GR	18	36	96	48	28	19	8	16	SGOR 181C	6	19,8	SGOR 18SW	18
3GR	20	42	108	54	31	19	8	18	SGOR 201C	6	22,8	SGOR 20SW	20
4GR	22	45	120	60	34	20,5	10	20	SGOR 221C	6	24,8	SGOR 22SW	22
5GR	25	50	132	66	38	20,5	10	23	SGOR 251C	8	28,3	SGOR 25SW	25
6GR	30	58	166	83	49	25	10	28	SGOR 301C	8	33,3	SGOR 30SW	30

Klíby a klíbové hriadele

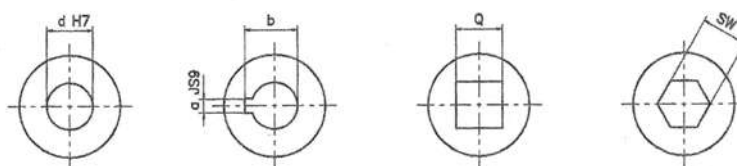
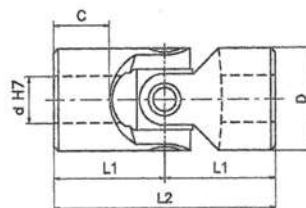
G



**Jednoduché klíby s křízným uložením
Séria G**

Max. uhol: 45°

Max. počet otáčok 1000/min



Typ	Kód	d	D	L2	L1	C	Kód	Kód	a	b	Kód	Q	SW*	Hmot. [kg]
01G	SGOS 0600	6	16	34	17	8	SGOS 061C	SGOS 062C	2	7	SGOS 062Q	6	6	0,05
02G	SGOS 0800	8	16	40	20	11	SGOS 081C	SGOS 082C	2	9	SGOS 082Q	8	8	0,05
03G	SGOS 1000	10	22	48	24	12	SGOS 101C	SGOS 102C	3	11,4	SGOS 102Q	10	10	0,10
04G	SGOS 1200	12	25	56	28	13	SGOS 121C	SGOS 122C	4	13,8	SGOS 122Q	12	12	0,16
05G	SGOS 1400	14	28	60	30	14	SGOS 141C	SGOS 142C	5	16,3	SGOS 142Q	14	14	0,20
1G	SGOS 1600	16	32	68	34	16	SGOS 161C	SGOS 162C	5	18,3	SGOS 162Q	16	16	0,30
2G	SGOS 1800	18	36	74	37	17	SGOS 181C	SGOS 182C	6	20,8	SGOS 182Q	18	18	0,45
3G	SGOS 2000	20	42	82	41	18	SGOS 201C	SGOS 202C	6	22,8	SGOS 202Q	20	20	0,60
4G	SGOS 2200	22	45	95	47,5	22	SGOS 221C	SGOS 222C	6	24,8	SGOS 222Q	22	22	0,95
5G	SGOS 2500	25	50	108	54	26	SGOS 251C	SGOS 252C	8	28,3	SGOS 252Q	25	25	1,20
6G	SGOS 3000	30	58	122	61	29	SGOS 301C	SGOS 302C	8	33,3	SGOS 302Q	30	30	1,85
6G1	SGOS 3200	32	58	130	65	33	SGOS 321C	SGOS 322C	10	35,3	SGOS 322Q	30	30	2,00
7G	SGOS 3500	35	70	140	70	35	SGOS 351C	SGOS 352C	10	38,3	-	-	-	3,15
8G	SGOS 4000	40	80	160	80	39	SGOS 401C	SGOS 402C	12	43,3	-	-	-	4,60
9G	SGOS 5000	50	95	190	95	46	SGOS 501C	SGOS 502C	14	53,8	-	-	-	7,60
03GB	SGBS 1000	10	16	52	26	15	SGBS 101C	SGBS 102C	3	11,4	SGBS 082Q	8	8	0,05
04GB	SGBS 1200	12	22	62	31	18	SGBS 121C	SGBS 122C	4	13,8	SGBS 102Q	10	10	0,12
1GB	SGBS 1600	16	25	74	37	21	SGBS 161C	SGBS 162C	5	18,3	SGBS 122Q	12	12	0,20
3GB	SGBS 2000	20	32	86	43	24	SGBS 201C	SGBS 202C	6	22,8	SGBS 1 62Q	16	16	0,35
5GB	SGBS 2500	25	42	108	54	31	SGBS 251C	SGBS 252C	8	28,3	SGBS 202Q	20	20	0,80
6GB	SGBS 3000	30	50	132	66	38	SGBS 301C	SGBS 302C	8	33,3	SGBS 252Q	25	25	1,20
8GB	SGBS 4000	40	70	166	83	47	SGBS 401C	SGBS 402C	12	43,3	-	-	-	2,90