

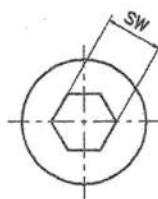
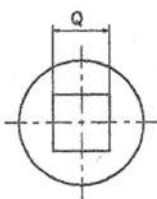
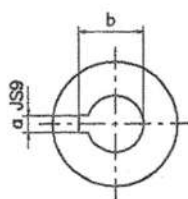
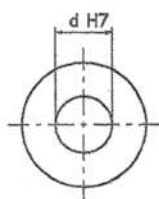
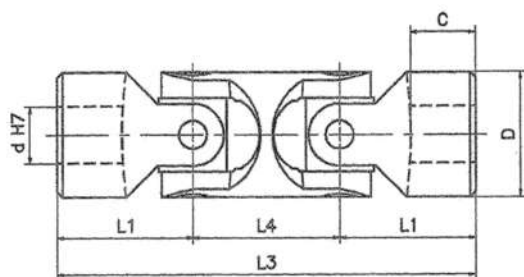
Klíby a klíbové hriadele

X



Dvojité klíby nerezové s kĺznym uložením
Séria X

Max. uhol: 90°



Typ	Kód	d	D	L3	L1	L4	C	a*	b*	Q*	SW*	Hmot. [kg]
01XD	SXOD 0600	6	16	56	17	22	8	2	7	6	6	0,08
02XD	SXOD 0800	8	16	62	20	22	11	2	9	8	8	0,08
03XD	SXOD 1000	10	22	74	24	26	12	3	11,4	10	10	0,15
04XD	SXOD 1200	12	25	86	28	30	13	4	13,8	12	12	0,25
1XD	SXOD 1600	16	32	104	34	36	16	5	18,3	16	16	0,45
3XD	SXOD 2000	20	42	128	41	46	18	6	22,8	20	20	1,00
5XD	SXOD 2500	25	50	163	54	55	26	8	28,3	25	25	2,00
6XD	SXOD 3000	30	58	190	61	68	29	8	33,3	30	30	2,90

Klíby a klíbové hriadele

H



Dvojité klíby s ihličkovým uložením

Séria H

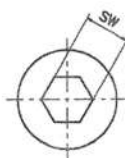
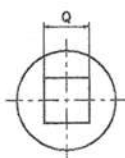
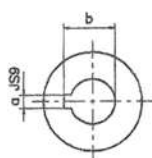
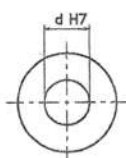
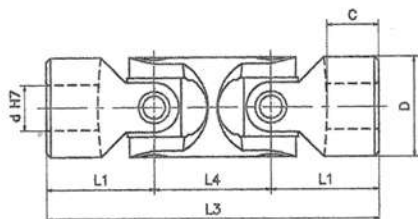
Bezúdržbové

Max. uhol: 45°

Max. počet otáčok 4000/min

H totožné s DIN 808

HB totožné s DIN 808/7551



Typ	Kód	d	D	L3	L1	L4	c	Kód	Kód	a	b	Kód	Q	SW*	Hmot. kg
03HD	SHOD 1000	10	22	74	24	26	12	SHOD 101C	SHOD 102C	3	11,4	SHOD 102Q	10	10	0,15
04HD	SHOD 1200	12	25	86	28	30	13	SHOD 121C	SHOD 122C	4	13,8	SHOD 122Q	12	12	0,25
05HD	SHOD 1400	14	28	96	30	36	14	SHOD 141C	SHOD 142C	5	16,3	SHOD 142Q	14	14	0,40
1HD	SHOD 1600	16	32	104	34	36	16	SHOD 161C	SHOD 162C	5	18,3	SHOD 162Q	16	16	0,45
2HD	SHOD 1800	18	36	114	37	40	17	SHOD 181C	SHOD 182C	6	20,8	SHOD 182Q	18	18	0,70
3HD	SHOD 2000	20	42	128	41	46	18	SHOD 201C	SHOD 202C	6	22,8	SHOD 202Q	20	20	1,00
4HD	SHOD 2200	22	45	145	47,5	50	22	SHOD 221C	SHOD 222C	6	24,8	SHOD 222Q	22	22	1,55
5HD	SHOD 2500	25	50	163	54	55	26	SHOD 251C	SHOD 252C	8	28,3	SHOD 252Q	25	25	2,00
6HD	SHOD 3000	30	58	190	61	68	29	SHOD 301C	SHOD 302C	8	33,3	SHOD 302Q	30	30	2,90
06HD1	SHOD 3200	32	58	198	65	68	33	SHOD 321C	SHOD 322C	10	35,3	SHOD 322Q	30	30	3,00
7HD	SHOD 3500	35	70	212	70	72	35	SHOD 351C	SHOD 352C	10	38,3	-	-	-	4,75
8HD	SHOD 4000	40	80	245	80	85	39	SHOD 401C	SHOD 402C	12	43,3	-	-	-	7,20
9HD	SHOD 5000	50	95	290	95	100	46	SHOD 501C	SHOD 502C	14	53,8	-	-	-	12,00
04HBD	SHBD 1200	12	22	88	31	26	18	SHBD 121C	SHBD 122C	4	13,8	SHBD 102Q	10	10	0,20
1HBD	SHBD 1600	16	25	104	37	30	21	SHBD 161C	SHBD 162C	5	18,3	SHBD 122Q	12	12	0,30
3HBD	SHBD 2000	20	32	124	43	38	24	SHBD 201 C	SHBD 202C	6	22,8	SHBD 162Q	16	16	0,50
5HBD	SHBD 2500	25	42	156	54	48	31	SHBD 251C	SHBD 252C	8	28,3	SHBD 202Q	20	20	1,20
6HBD	SHBD 3000	30	50	188	66	56	38	SHBD 301C	SHBD 302C	8	33,3	SHBD 252Q	25	25	1,70
8HBD	SHBD 4000	40	70	238	83	72	47	SHBD 401C	SHBD 402C	12	43,3	-	-	-	4,30

Kĺby a kĺbové hriadele

G



Dvojité kĺby s kĺznym uložením

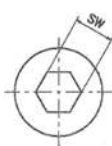
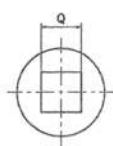
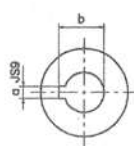
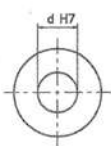
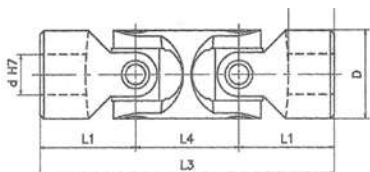
Séria G

Max. uhol: 90°

Max. počet otáčok 1000/min

GD totožné s DIN 808

GBD totožné s DIN 808/7551



Typ	Kód	d	D	L3	L1	L4	C	Kód	Kód	a	b	Kód	Q	SW*	Hmot. [kg]
01GD	SGOD 0600	6	16	56	17	22	8	SGOD 061C	SGOD 062C	2	7	SGOD 062Q	6	6	0,08
02GD	SGOD 0800	8	16	62	20	22	11	SGOD 081C	SGOD 082C	2	9	SGOD 082Q	8	8	0,08
03GD	SGOD 1000	10	22	74	24	26	12	SGOD 101C	SGOD 102C	3	11,4	SGOD 102Q	10	10	0,15
04GD	SGOD 1200	12	25	86	28	30	13	SGOD 121C	SGOD 122C	4	13,8	SGOD 122Q	12	12	0,25
05GD	SGOD 1400	14	28	96	30	36	14	SGOD 141C	SGOD 142C	5	16,3	SGOD 142Q	14	14	0,40
1GD	SGOD 1600	16	32	104	34	36	16	SGOD 161C	SGOD 162C	5	18,3	SGOD 162Q	16	16	0,45
2GD	SGOD 1800	18	36	114	37	40	17	SGOD 181C	SGOD 182C	6	20,8	SGOD 182Q	18	18	0,70
3GD	SGOD 2000	20	42	128	41	46	18	SGOD 201C	SGOD 202C	6	22,8	SGOD 202Q	20	20	1,00
4GD	SGOD 2200	22	45	145	47,5	50	22	SGOD 221C	SGOD 222C	6	24,8	SGOD 222Q	22	22	1,55
5GD	SGOD 2500	25	50	163	54	55	26	SGOD 251C	SGOD 252C	8	28,3	SGOD 252Q	25	25	2,00
6GD	SGOD 3000	30	58	190	61	68	29	SGOD 301C	SGOD 302C	8	33,3	SGOD 302Q	30	30	2,90
06GD1	SGOD 3200	32	58	198	65	68	33	SGOD 321C	SGOD 322C	10	35,3	SGOD 322Q	30	30	3,00
7GD	SGOD 3500	35	70	212	70	72	35	SGOD 351C	SGOD 352C	10	38,3	-	-	-	4,75
8GD	SGOD 4000	40	80	245	80	85	39	SGOD 401C	SGOD 402C	12	43,3	-	-	-	7,20
9GD	SGOD 5000	50	95	290	95	100	46	SGOD 501C	SGOD 502C	14	53,8	-	-	-	12,00
03GBD	SGBD 1000	10	16	74	26	22	15	SGBD 101C	SGBD 102C	3	11,4	SGBD 082Q	8	8	0,08
04GBD	SGBD 1200	12	22	88	31	26	18	SGBD 121C	SGBD 122C	4	13,8	SGBD 102Q	10	10	0,20
1GBD	SGBD 1600	16	25	104	37	30	21	SGBD 161C	SGBD 162C	5	18,3	SGBD 122Q	12	12	0,30
3GBD	SGBD 2000	20	32	124	43	38	24	SGBD 201C	SGBD 202C	6	22,8	SGBD 162Q	16	16	0,50
5GBD	SGBD 2500	25	42	156	54	48	31	SGBD 251C	SGBD 252C	8	28,3	SGBD 202Q	20	20	1,20
6GBD	SGBD 3000	30	50	188	66	56	38	SGBD 301C	SGBD 302C	8	33,3	SGBD 252Q	25	25	1,70
8GBD	SGBD 4000	40	70	238	83	72	47	SGBD 401C	SGBD 402C	12	43,3	-	-	-	4,30